

Workshare DeltaView the World's Leading Document Comparison Tool

WORKSHARE

DOCUMENT INTEGRITY SOLUTIONS

Save Money & Time

Accurate Document Comparison

Highly Reliable

Anyone who deals with the creation of documents knows that content constantly changes. These changes are made by the document owner as well as contributors and reviewers. Keeping track of the many changes in the content of documents is a difficult and time-consuming process. Workshare® DeltaView® gives users of complex documents an easy way to compare two documents and get an accurate comparison. Workshare DeltaView's leading document comparison engine ensures fast, accurate, and reliable document comparisons.

Save Time and Money Working on Complex Documents

The amount of time spent editing and reviewing the changes made to complex documents is staggering. Manually reviewing printed documents for changes, cutting and pasting the changes online, and merging documents are just a few of the cumbersome ways that professionals are forced to compare their documents today.

Workshare DeltaView provides a fast and economical way to understand detailed changes in documents:

- Compares documents quickly and effortlessly utilizing the fastest change recognition engine on the market
- Enhances efficiency and streamlines the document review process
- Provides an easy-to-use interface

Increase Accuracy and Productivity When Reviewing Changes Between Documents

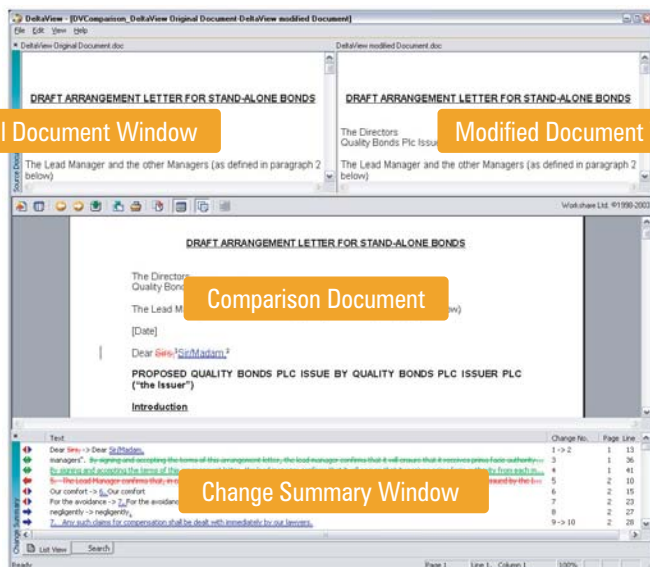
Manually reviewing the differences between two documents can lead to costly errors and overlooked changes. Workshare DeltaView provides a single, comparison document in a simple, easy-to-read format. Fully understanding all changes can increase the accuracy of the final document, thereby increasing the productivity of the document editor:

- Ensures confidence knowing the changes between the two documents are accurately displayed
- Handles complex and long documents with great accuracy

Reliable Document Navigation

Finding the differences between two documents requires keeping track of where changes were made in each document. Dealing with long, complex documents can be an extremely difficult task. Workshare DeltaView provides a fast and reliable way to navigate through two documents simultaneously while checking for revisions made:

- Rapidly advances through changes with a simple click
- Automatically synchronizes documents shown in each of the three panes (original document, modified document, and comparison document)
- Easily navigates through changes by clicking on the highlighted change or change number
- Three-pane view: Displays the original, modified & redline document within a single interface
- Change Summary window: Lists all the changes within the document in the order in which they were made.



Details

- **Three-pane view:** Displays the original, modified & redline document within a single interface
- **Change Summary window:** Lists all the changes within the document in the order in which they were made
- **Synchronized scrolling:** Simultaneously scrolls each document within the three-pane view to display the same word or phrase
- **Expanded rendering sets options:** Specifies how changes should be represented; allows for house styles
- **Advanced formatting comparisons:** Provides a detailed comparison of tables, nested tables, spaces, and Microsoft Word styles & characters
- **Change numbers:** Displays change numbers in the margin of the redline
- **Hidden text:** Displays hidden text within the comparison document
- **Selective page printing:** Saves printing resources in long documents by printing only pages where changes have occurred
- **Integration with Adobe® Acrobat PDF:** Saves comparison document in PDF format
- **Failsafe comparisons:** Compares highly complex documents by stripping items down to the text level
- **Graceful document comparison:** Includes auto-retry feature that allows for continued comparisons even if a problem area in a document is identified.
- **Easier installation and upgrade**

"We cannot live without
Workshare DeltaView..."

— Maryanna Bell
MIS Director
Steeffel, Levitt & Weiss

Text	Change No.	Page	Line
Dear Sirs , -> Dear <u>Sir/Madam</u> ,	1 -> 2	1	13
managers". <u>By signing and accepting the terms of this arrangement letter, the lead...</u>	3	1	36
<u>By signing and accepting the terms of this arrangement letter, the lead manager co...</u>	4	1	41
5. The Lead Manager confirms that, in connection with the proposed issue of the S...	5	2	10
Our comfort -> <u>6. Our comfort</u>	6	2	15
For the avoidance -> <u>7. For the avoidance</u>	7	2	23
negligently -> negligently ₁	8	2	27
<u>7. Any such claims for compensation shall be dealt with immediately by our lawyers.</u>	9 -> 10	2	28
14. <u>Our work will, where appropriate, be conducted in accordance with [the invest...</u>	11	3	11
jurisdiction. -> jurisdiction. <u>Our work will, where appropriate, be conducted in accor...</u>	12	3	17
agreement of terms, <u>provide</u> other services -> agreement of terms, <u>providing</u> other...	13 -> 14	3	43
of the issuer -> of the issuer	15	4	34
3 - If specific procedures and appropriate terms (e.g. as to timing and fees) are agr...	16	4	34
7 -> 1	17 -> 18	4	34

Figure 2: Workshare DeltaView Change Summary Pane

Summary

Comparing documents is a challenge that business professionals must deal with on a daily basis. Manually comparing documents is a laborious process and can be an enormous time drain. This manual process can also be costly, as overlooked changes can potentially cause repercussions later. Companies need a solution that eases the process of comparing documents and then allows the changes that have taken place to be easily viewed. This leaves professionals with more time to focus on the most important aspect of their job—their clients.

The Solution is Workshare DeltaView.

SPECIFICATIONS

Email Integration:

MAPI- and SMTP-compliant email

Operating Systems:

Microsoft® Windows® 98
Microsoft® Windows® NT
Microsoft® Windows® 2000
Microsoft® Windows® XP Professional

Word Processors:

Microsoft® Word 97 SR-2b and later
Microsoft® Word 2000
Microsoft® Word XP
Microsoft® Word 2003

Browser:

Microsoft® Internet Explorer 5.0 and later

Minimum System Requirements:

166MHz processor
32MB RAM
30MB free disk space
Recommended System Requirements:
300MHz+ processor
64MB RAM
30MB free disk space

DMS Integration:

Interwoven infoLook™ 2.0 and 2.2
Interwoven Mailsite™ 3.0 and 4.0
Interwoven Server 4.1 for Interwoven infoRite™ clients 5.2
Interwoven Server 5.0 for Interwoven infoRite™ clients 5.2 and 5.3
Interwoven Server 7.0 / 7.2 for Interwoven Desksite® 6.01a clients
Interwoven Server 7.5 for Interwoven Desksite 6.6 & Interwoven Mailsite™ 4.1 clients
Interwoven Worksite Server 8 for Interwoven Desksite 8 & Interwoven Mailsite 8 clients
Hummingbird DOCS Open® 3.7.2 (sp3) and later
Hummingbird PowerDOCS® 3.9 and later
Hummingbird DM 5.1 and later with Explorer Outlook and Desktop Extensions
World Software WORLDOX® Version 8.0, WORLDOX 2000, and WORLDOX 2002
Microsoft Windows Local File

London <

Frankfurt <

The Hague <

San Francisco <

New York <

Chicago <

Hong Kong <

Sydney <

To contact Workshare please visit
www.workshare.com/contactus